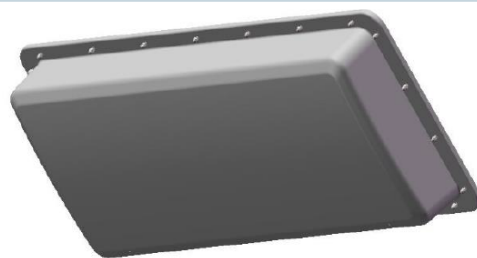




The high capacity venue MIMO antenna I-ATPS6-43-698/3800M-2260 is designed for broadband DAS applications supporting all kind of safety as well as 4G and 5G commercial wireless communication networks.

The antenna is specifically optimized for stadium applications to allow for capacity optimized designs with a minimum of interferences between individual sectors.

The antenna combines an aesthetical design with superior electrical characteristics notably a PIM optimized design to minimize network interferences. The antenna is constructed from lightweight materials ideal for easy ceiling mounting. The low profile and off-white radome blends easily into most building aesthetics with minimum visual impact.



I-ATPS6-43-698/3800M-2260

FEATURES / BENEFITS

- **Wideband panel antenna supporting the frequency bands 698-960MHz /1695-2700MHz / 3300-3800MHz**
- **Ideally suited for high capacity venues as stadiums**
- **Indoor distribution of 2G/3G/4G/5G wireless networks ideally combined with multi-band MIMO**
- **High level of side lobe suppression minimizing interferences between sectors**
- **PIM optimized antenna design (-153dBc @2x20W)**
- **Low sidelobes**
- **Consistent pattern over the full spectrum**
- **Aesthetical visual appearance, compact and light weight**
- **4.3-10 female connector**

Technical features

GENERAL SPECIFICATIONS

Product Type		High Capacity Venue MIMO Antenna
Techn. Application		Indoor

MECHANICAL SPECIFICATIONS

Number of Input Ports		2
Connectors		4.3-10 female
Mounting Hardware included		Mounting Bracket
Height (Less Connectors)	mm (in)	120 (4.7)
Width (Less Connectors)	mm (in)	425 (16.7)
Length (Less Connectors)	mm (in)	970 (38.2)
Weight	kg (lb)	10.5 (23)



ELECTRICAL SPECIFICATIONS

Frequency	MHz	698 - 800	800 - 960	1695 - 2180	2180 - 2700	3300 - 3800
Gain, typ.	dBi	11.5	12.5	12.0	13.0	13.0
VSWR / Return Loss	max	1.7 / 11.7	1.7 / 11.7	1.7 / 11.7	1.7 / 11.7	1.7 / 11.7
Beamwidth, Vertical, typ.	°	68	65	68	64	65
Beamwidth, Horizontal, typ.	°	25.5	22	24	20	21
Isolation	dB	24	24	23	23	24
Front-to-Back Ratio	dB	25	25	28	28	28
Horizontal sidelobe	dB	16	16	16	16	16
Maximum Input Power	W	200	200	200	200	100
Impedance, Ohm	Ω	50				
Polarization		+/- 45°				
Intermodulation (IM3)		- 153dBc with 2 x 20W				

MATERIAL

Radome Material		ABS, ASA, UV resistant
Radome Color		White

TEMPERATURE SPECIFICATIONS

Operation Temperature	°C (°F)	-40 to 70 (-40 to 158)
-----------------------	---------	-------------------------

TESTING AND ENVIRONMENTAL

Environmental Class		IP65
---------------------	--	------

External Document Links

Notes